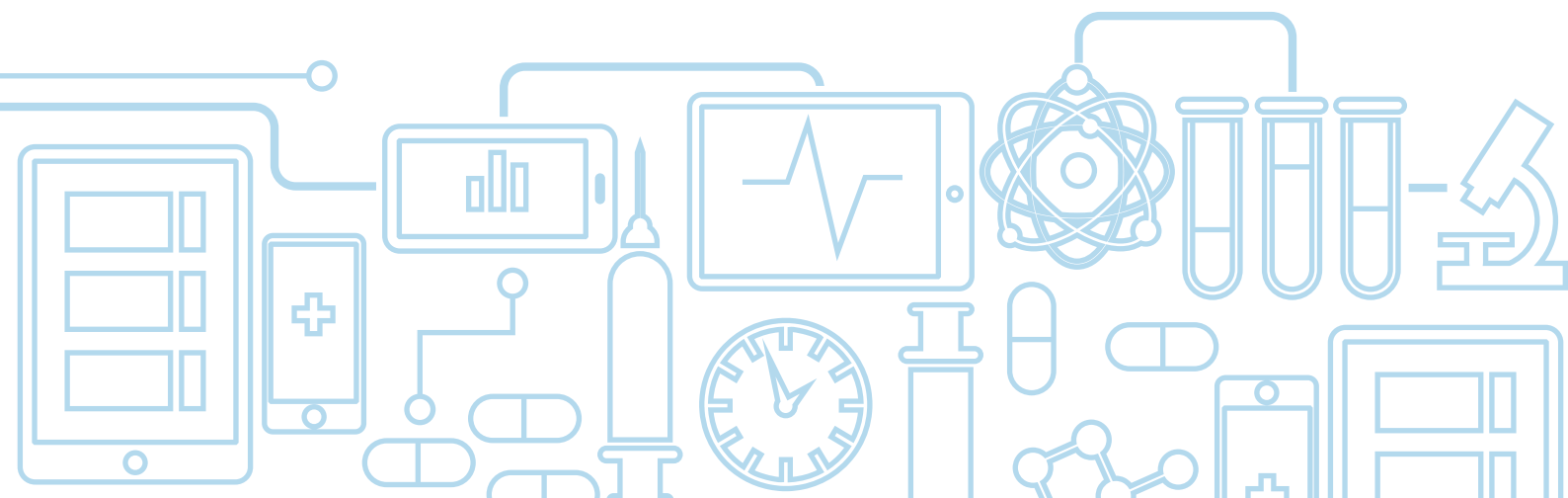




# A bespoke medical app solution for real time dynamic content delivery and collection

- Build and manage thousands of pages of content 24/7
- Fully native for Apple and Android phone and tablet
- Works offline across thousands of devices worldwide
- Maintain content for multiple regions in multiple languages
- Include complex forms for data collection
- Integrate into 3rd party software
- Utilise device hardware and sensors



# Just some of the uses include...



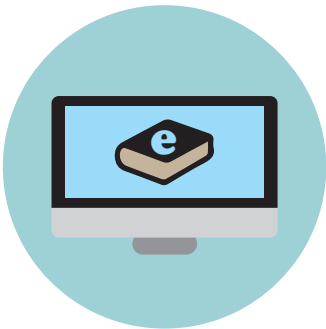
E-requesting



Inductions



Research



E-learning



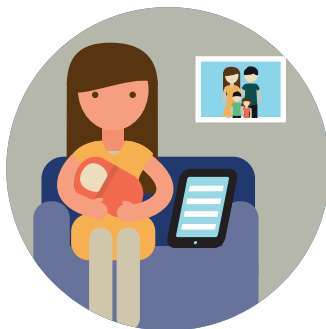
Manuals



Formularies



Mobile workforce management



Patient guides and Pathways



Pre and post operation information and form requests

Technical Health have created a unique native app solution which caters for a wide range of uses across the NHS and healthcare. Already our bespoke white label system has been used by several NHS organisations. The system is quick to set up, easy to use and affordable.

# Content Management

No need to resubmit your app to the stores every time you want to make an update to the content. Edit your app content 24/7 via a password protected web based content management system (CMS).

## Content

From the CMS, you can create and edit thousands of pages of content with text, pictures, tables, lists, documents, videos and audio.

## Search

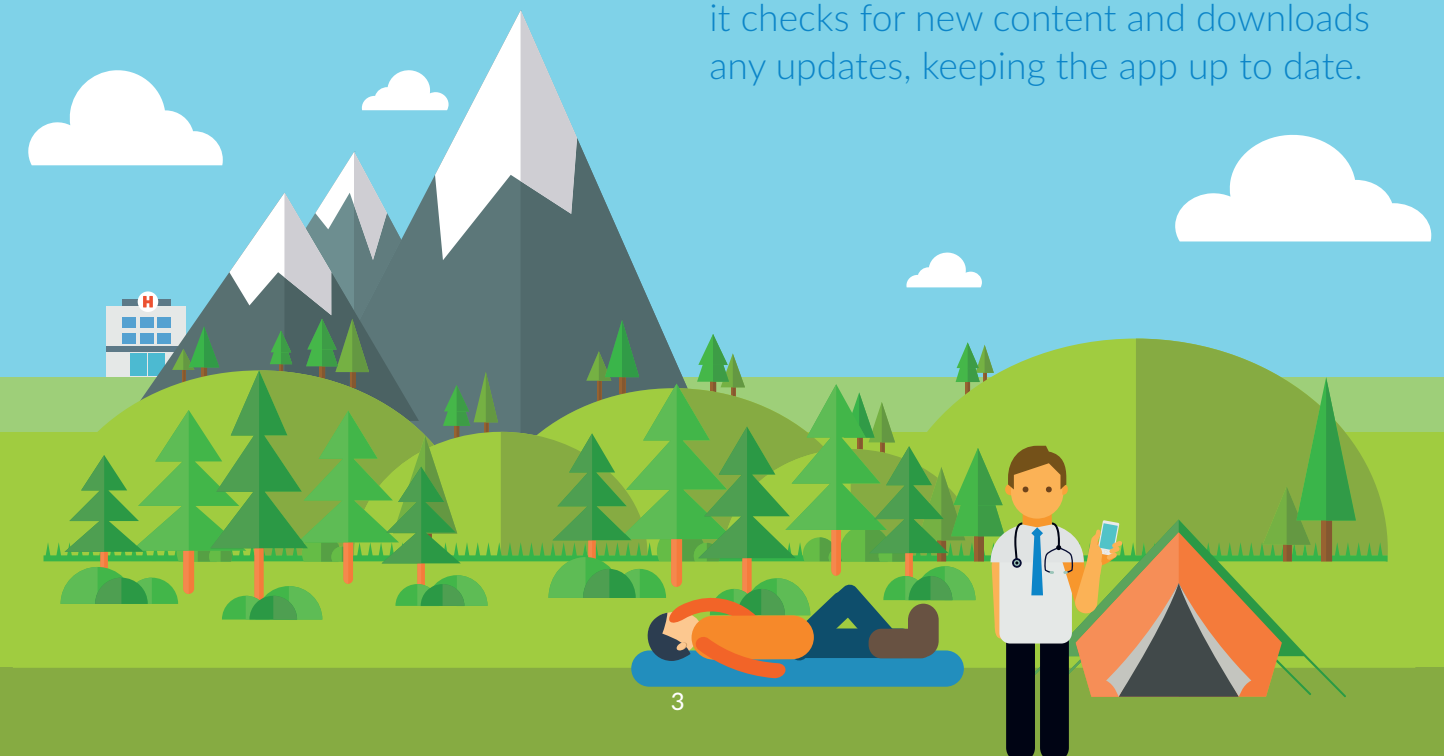
Users can browse your content via a number of categories as well as searching via keyword.

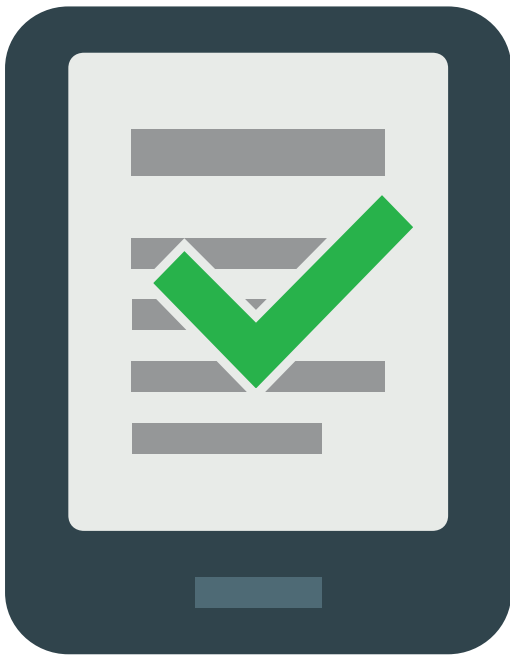


## It works offline

When a user downloads your app, they get the latest version of the content so they can then use the app offline without an Internet connection, anywhere in the world.

When the device connects to the Internet, it checks for new content and downloads any updates, keeping the app up to date.





## Live preview

In the content management system, you can see what your pages will look like in a number of devices as you edit so you can make sure it's right before you push it out to the world.

## Archive

Manage accountability - Check back on what the content was at any given date and time for up to 7 years. Every time admin make a change to the content the system records the change they made, who made it and when they made it.

## Multi-language

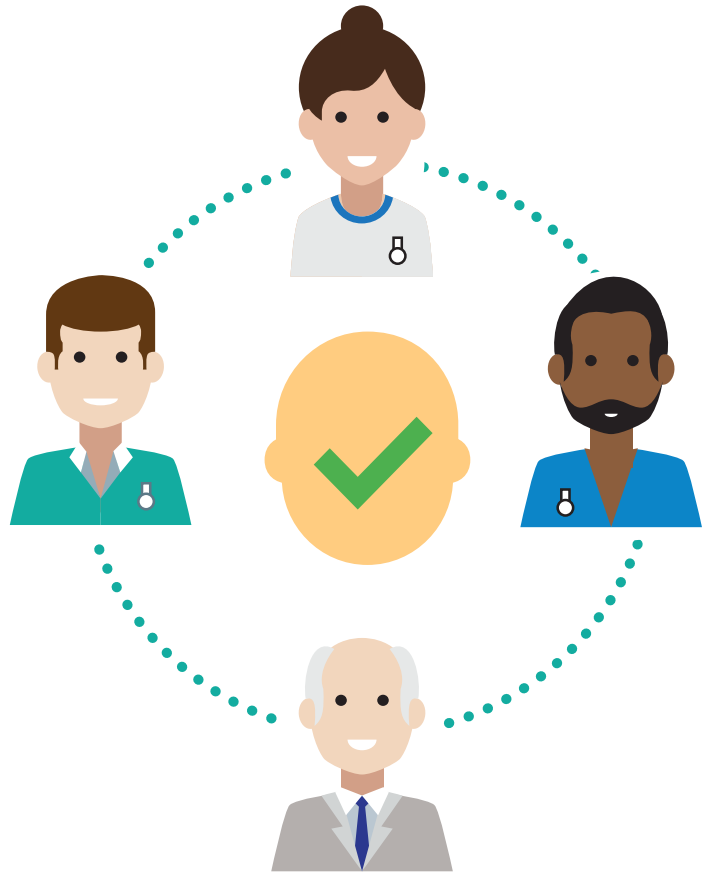
Write and serve content in multiple languages.

## Multiple layouts

Create different content layouts for phones and tablets.

## Multiple admin

You can set multiple admin accounts with different levels of access; some admin might only create and edit specified content whilst other admin have the ability to publish that same content.



## Push notifications

Send update notifications to your users from the CMS using Apple and Google's push notification networks.



# Pull Data

We can integrate surveys and forms into your app such as work sheets, requests, risk assessments, diaries, logs, even time sheets. When users complete this information the data can be viewed from within the CMS and downloaded.

## Forms work offline too!

When the user completes a form, the data gets stored on the device and waits until there's an Internet connection to send the data back to the CMS. If the connection is lost half way through submission that's not a problem – the system is clever enough to pick up right from where it left off. It even tells the user what's been submitted and what forms are awaiting synchronization.



## Signatures

Need your forms to be signed off? We can include the need for users to electronically sign forms which will then be stored with the data in the CMS.

## Security & privacy

All data resides behind an SSL and we can incorporate higher levels of security and encryption of data if required.

## Permission based access and content

Your app can be free access for anyone or we can make it so that a password is required. Set up and manage your users from within the CMS and even earmark different content and forms for different users or groups of users.

## Statistics and metrics

Access a range of data about your app and how it is being used through the CMS.

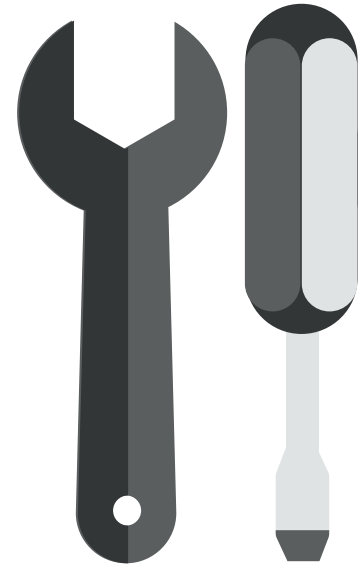


# Even More User Tools

## Maps & GPS

Include Google maps with your content and annotate with place markers and text.

Integrate GPS to give users the ability to search for points of interest based on their location.



## QR Code reader

We can integrate a QR code reader into the app for identity scanning.

## Photos

A facility for users to take photographs on the device, annotate those pictures and submit them back to the CMS.

## Integrate with other systems

Pull data and pre-populate your forms from other 3rd party software such as internal servers or job systems.

Integrate device calendars such as MS Office 365 or Google.

Integrate device-native features such as weather and navigation apps.



# Platforms & Devices



- The app works across both iOS and Android. We support iOS 6+ on the iPhone and iPad and Android: 3.2.+ phone and tablet.
- The Content Management system is optimised for latest web browsers – Chrome, Firefox, IE 11 and Edge.
- The app resizes to fit almost every device screen size and works across over 8000 different device models worldwide.

## What's Next?

Contact us for more information

01392 427358

info@technicalhealth.co.uk

# Our Service

We treat each project as a bespoke solution. We look after and guide you through the whole process from planning, design, build, training, launch and post launch.

## Design

The system is white labelled so it is branded to become your app in your particular choice of styling, colour and brand with your content and your choice of features.

## Bespoke requirements

If you have a unique requirement, we can develop it for inclusion in the system.

## Training

The system is extremely easy to use and only takes a couple of hours training to get to grips with.

## Hosting

We look after the setup and ongoing hosting of the CMS and your data.

## Launch

We help you to register with the app stores and submit the app on your behalf. If your app is not for public use and only for a single company we set up your own enterprise account for your users to download the app from.

## Future expansion

Once you have seen the effectiveness of the system, you may wish to add new features and expand current ones. We run a continuous programme of development to improve our system with new modules and improved functionality. We will keep you informed of new features and will integrate bespoke requirements (at additional cost) as you need them.

## How much does it cost?

The cost varies according to the complexity of your project. We quote once we fully understand what you need. Currently, we charge a one-off fee to design and build the app, with post-launch upgrades carrying an additional fee quoted on a per-project basis. There is a yearly data-hosting fee.



# Case Studies

## Primary Trauma Care Foundation

Primary Trauma Care (PTC) is a system of training for front-line staff in trauma management, aimed at preventing death and disability in seriously injured patients.

Technical Health developed a content managed app manual for use by those who are attending, or already have a certificate of attendance, at the two-day Primary Trauma Care course. The app had to include many pages of text, tables, lists, videos and images. All the content had to be split into a number of categories for easy searching. It was vital that the app worked across low-cost devices without an Internet connection, as PTC is aimed specifically at the needs and logistics of health practitioners in the developing world.



### Download the Apple App

<https://geo.itunes.apple.com/gb/app/ptc-app/id1022383644?mt=8>

### Download the Android App

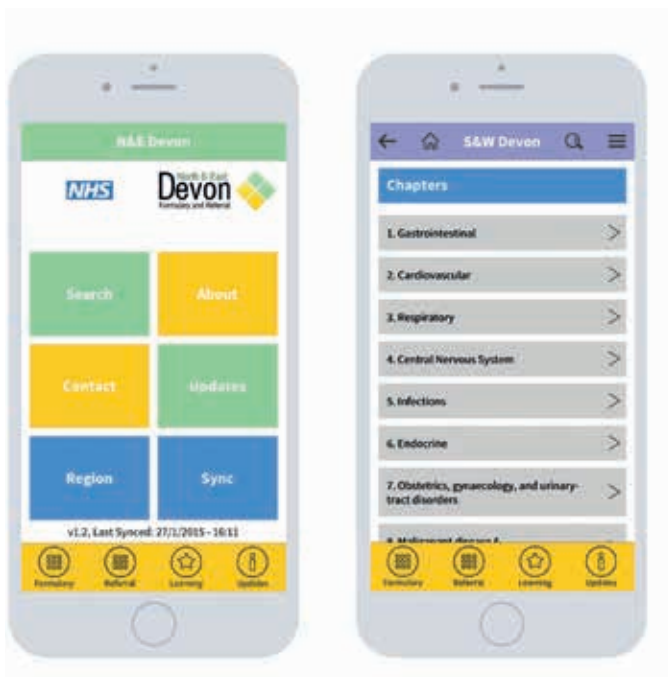
<https://play.google.com/store/apps/details?id=org.primarytraumacare.app>

## Case Study

### The Devon Formulary and Referral

Promoting safe, effective, and economic prescribing in primary and secondary care and providing guidance on locally recommended drug choices.

The Devon Formulary and Referral includes thousands of pages – all content managed from our CMS by a team in several locations. Admin update the app sometimes daily across two versions of the content – one for North & East and the other for the South & West of Devon. Users only download one app and can chose which locations content they wish to browse. Additional to the project was the inclusion of quizzes to engage users, as well as pulling the data out to two separate websites whilst still managing everything from one CMS.



#### Download the Apple App

<https://itunes.apple.com/LB/app/id953798851?mt=8>

#### Download the Android App

<https://play.google.com/store/apps/details?id=nhs.uk.devonformularyguidance>

## Case Study

### Handi – Taunton and Somerset NHS Trust

HANDi Taunton has been developed by the paediatric team at Musgrove Park Hospital to provide expert support to parents/carers and medical professionals looking after children with the most common childhood illnesses.

The app provides support to parents/carers and medical professionals when and where they need it. Guidance includes illness-specific information, home and hospital assessment pathways, and signposts towards appropriate local healthcare settings.

All the app content is managed and kept up to date via the CMS. The device GPS gives users the ability to find their nearest hospital and a survey is included which feeds back user answers to the HANDi team all through the CMS.



#### Download the Apple App

<https://itunes.apple.com/gb/app/handi-taunton/id969445171?mt=8>

#### Download the Android App

[https://play.google.com/store/apps/details?id=com.myoxygen.handi.taunton&hl=en\\_GB](https://play.google.com/store/apps/details?id=com.myoxygen.handi.taunton&hl=en_GB)

#### What's next? Contact us for more information 01392 427358

[info@technicalhealth.co.uk](mailto:info@technicalhealth.co.uk)